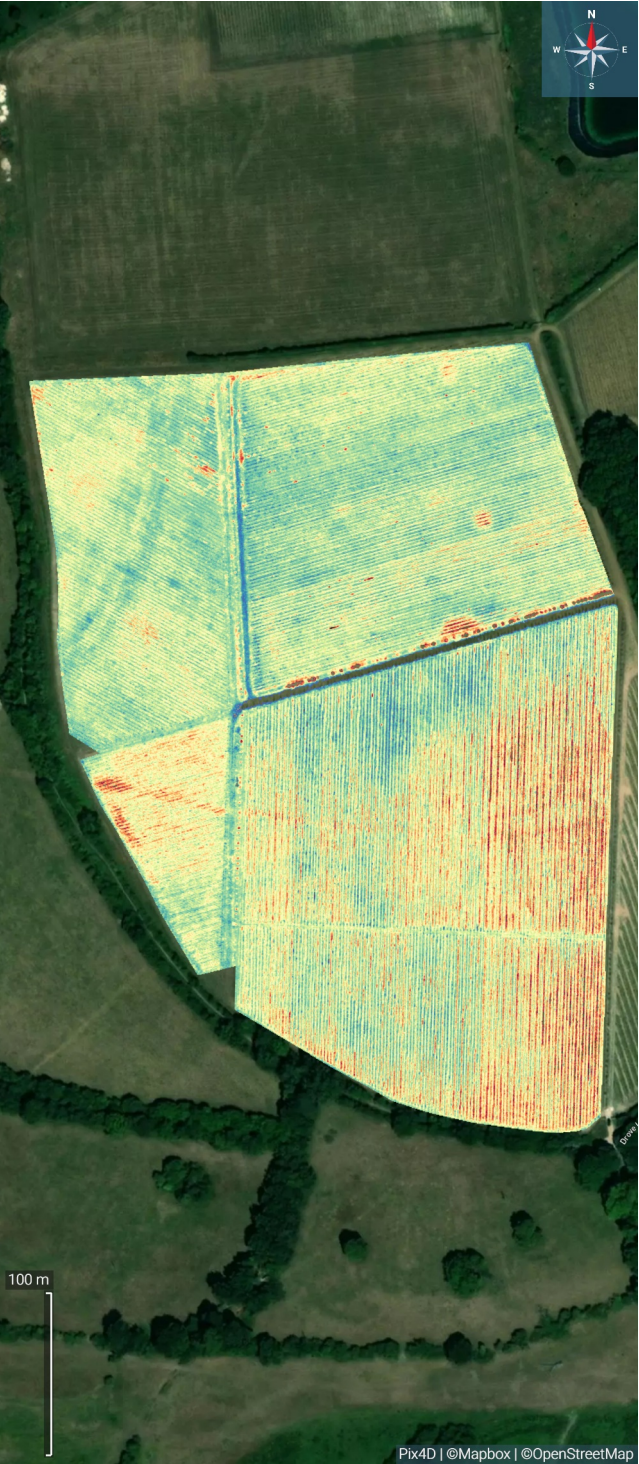


Ping West 01 Sept 24



West 0109024

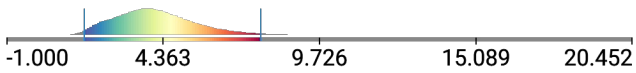
Layer name	Acquisition time	Center	Area	Page
Chl Green	01/09/2024 10:43:36 GMT Summer Time	51.0934107, -1.1848528 (WGS84)	12.705 ha	2
NDRE	01/09/2024 10:43:36 GMT Summer Time	51.0934107, -1.1848528 (WGS84)	12.705 ha	3
Orthomosaic - Boundary West	01/09/2024 10:43:36 GMT Summer Time	51.0934107, -1.1848528 (WGS84)	12.713 ha	4
Powdery Mildew Index RE	01/09/2024 10:43:36 GMT Summer Time	51.0934107, -1.1848528 (WGS84)	12.705 ha	5
ReCI chlorophyll leaf content	01/09/2024 10:43:36 GMT Summer Time	51.0934107, -1.1848528 (WGS84)	12.705 ha	6-9
Sat NDMI	23/08/2024 13:17:00 GMT Summer Time	51.0933810, -1.1848034 (WGS84)	13.072 ha	10



Layer details

Acquisition	01/09/2024 10:43:36 GMT Summer Time Duration: 00:21:20
Center	51.0934107, -1.1848528 (WGS84)
Area	~12.705 ha
GSD	2.941 cm/px
Bands	1 (Gray)

Histogram and Legend

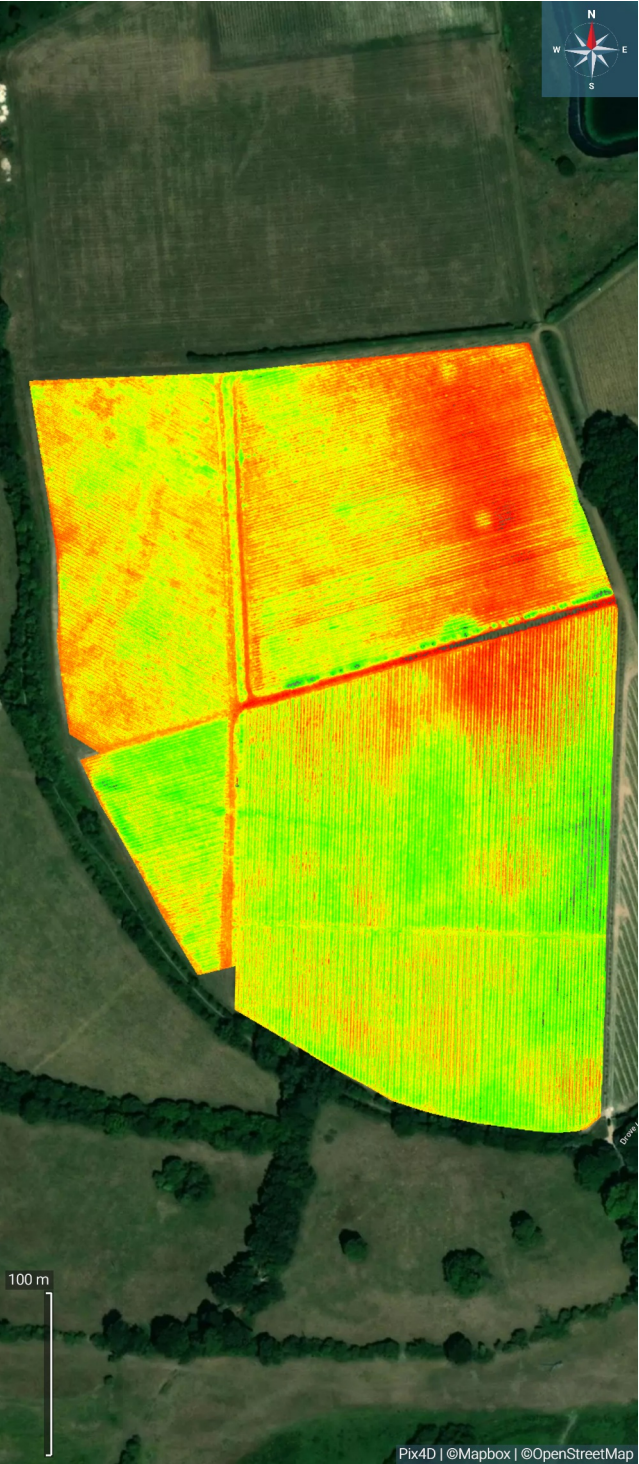


Visualization settings

Histogram equalization: Off
Selected minimum value: 1.661
Selected maximum value: 7.723
Values out of range: Transparent

Statistics

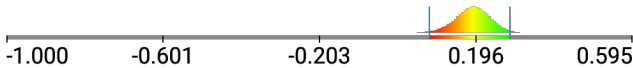
Layer area: 12.705 ha
Mean index: 4.071
Index SD: 1.382
Mean index (visible): 4.056
Index SD (visible): 1.260



Layer details

Acquisition	01/09/2024 10:43:36 GMT Summer Time Duration: 00:21:20
Center	51.0934107, -1.1848528 (WGS84)
Area	~12.705 ha
GSD	2.941 cm/px
Bands	1 (Gray)

Histogram and Legend



Visualization settings

Histogram equalization: On
Selected minimum value: 0.077
Selected maximum value: 0.283
Values out of range: Transparent

Statistics

Layer area: 12.705 ha
Mean index: 0.186
Index SD: 0.044
Mean index (visible): 0.186
Index SD (visible): 0.040

Orthomosaic - Boundary West

Orthomosaic



Layer details

Acquisition	01/09/2024 10:43:36 GMT Summer Time Duration: 00:21:20
Center	51.0934107, -1.1848528 (WGS84)
Area	~12.713 ha
GSD	2.941 cm/px
Bands	5 (Green, Red, Red edge, NIR, Alpha)

Powdery Mildew Index RE

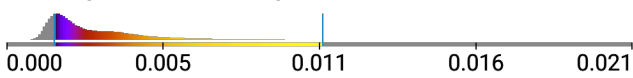
Index



Layer details

Acquisition	01/09/2024 10:43:36 GMT Summer Time Duration: 00:21:20
Center	51.0934107, -1.1848528 (WGS84)
Area	~12.705 ha
GSD	2.941 cm/px
Bands	1 (Gray)

Histogram and Legend



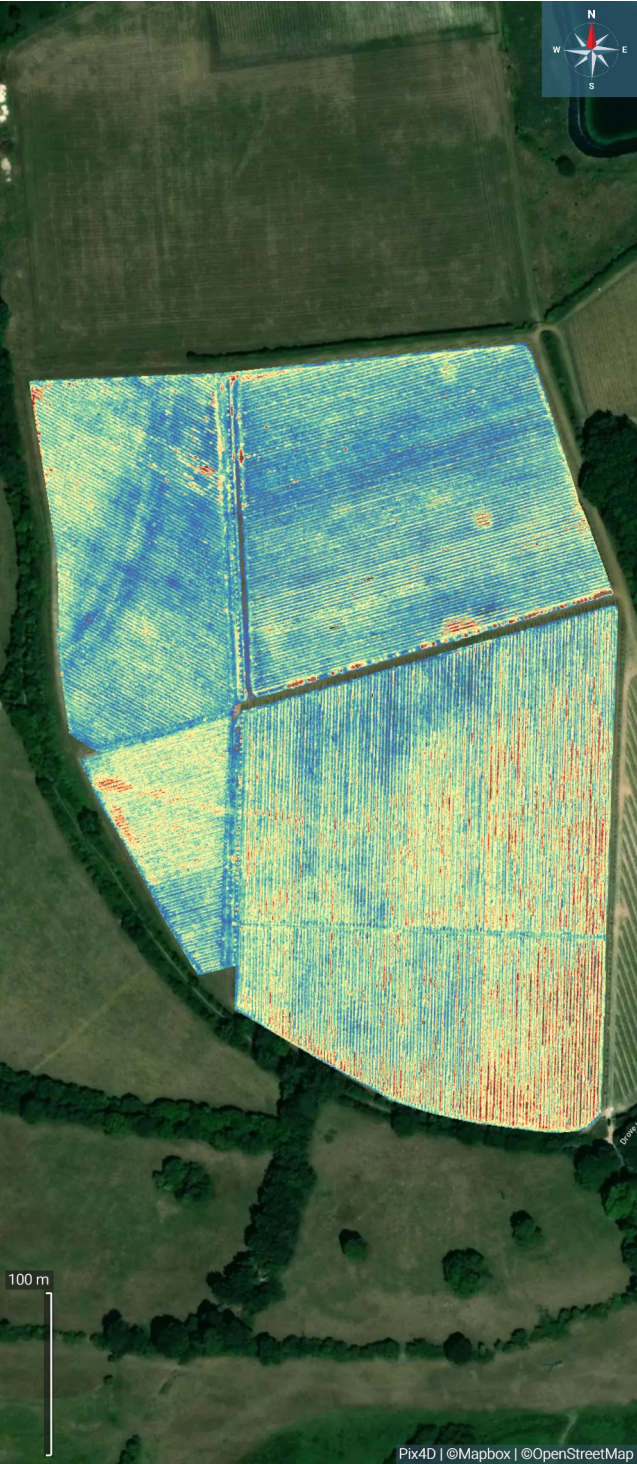
Visualization settings

Histogram equalization: On
Selected minimum value: 0.002
Selected maximum value: 0.011
Values out of range: Transparent

Statistics

Layer area: 12.705 ha
Mean index: 0.003
Index SD: 0.002
Mean index (visible): 0.004
Index SD (visible): 0.002

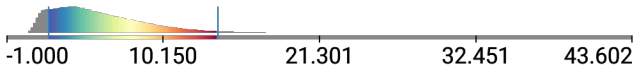
ReCI chlorophyll leaf content Index



Layer details

Acquisition	01/09/2024 10:43:36 GMT Summer Time Duration: 00:21:20
Center	51.0934107, -1.1848528 (WGS84)
Area	~12.705 ha
GSD	2.941 cm/px
Bands	1 (Gray)

Histogram and Legend



Visualization settings

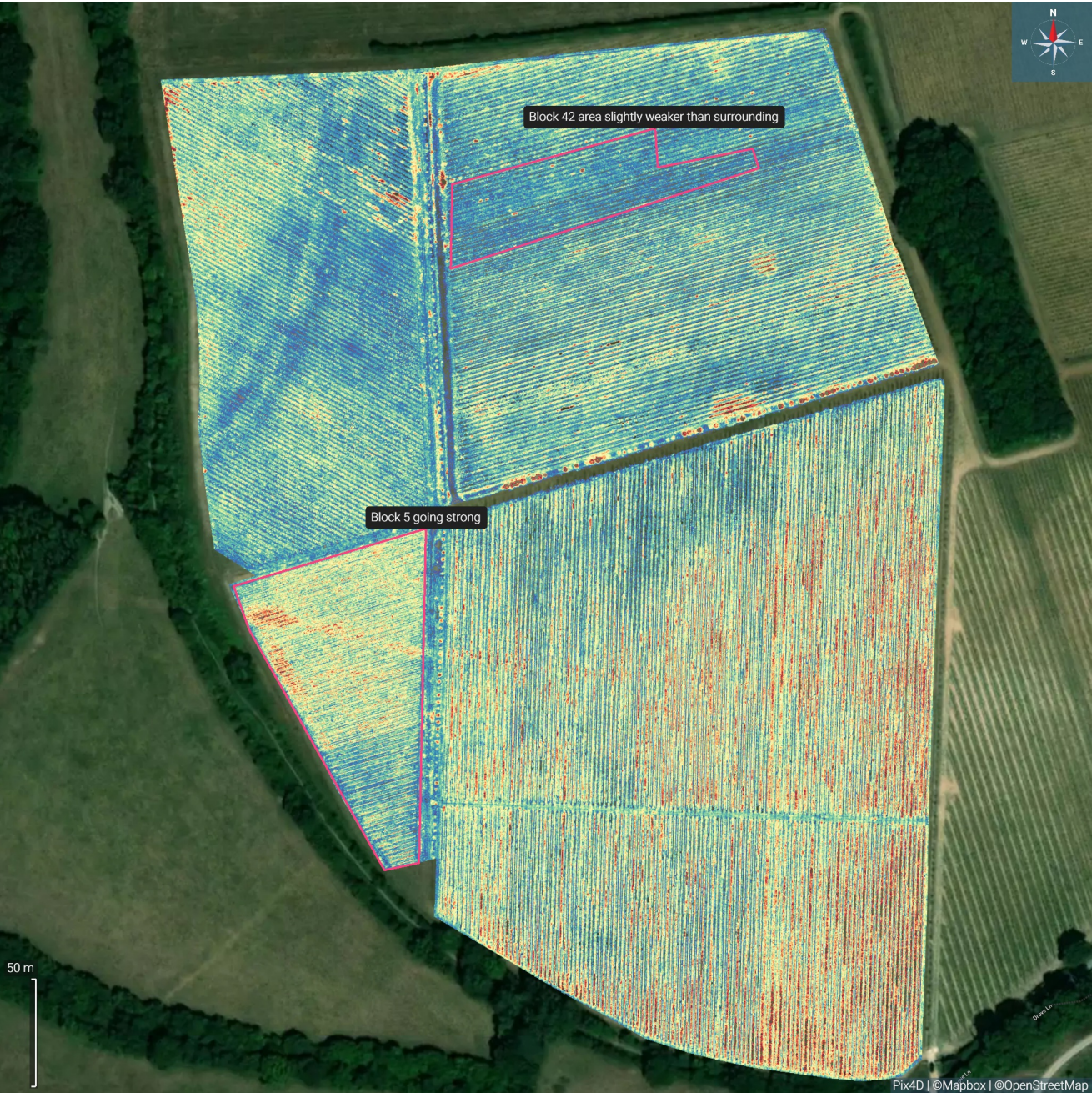
Histogram equalization: Off
Selected minimum value: 1.988
Selected maximum value: 14.045
Values out of range: Transparent

Statistics

Layer area: 12.705 ha
Mean index: 5.452
Index SD: 3.216
Mean index (visible): 5.807
Index SD (visible): 2.755

ReCI chlorophyll leaf content

with 2 annotations








All area annotations	1.151 ha
----------------------	----------

ReCI chlorophyll leaf content

Annotations

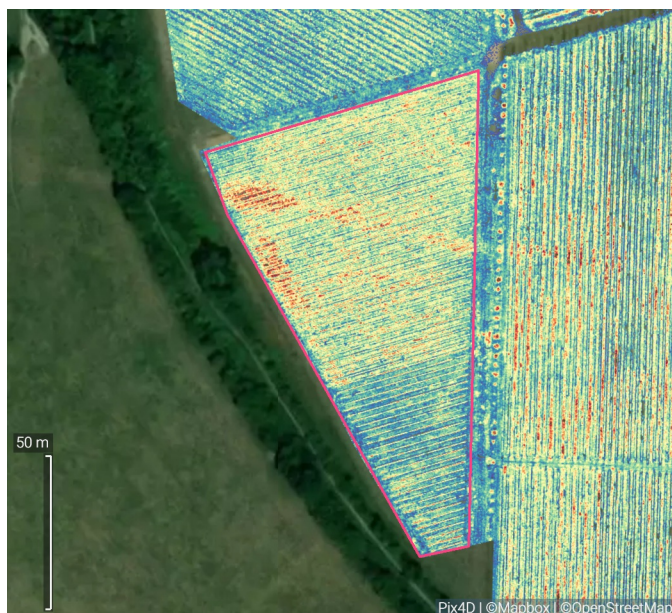


Name	Type	Position, length, area or count	Description	Attachm.	Color
Block 5 going strong	 Area	0.772 ha	-	-	 Magenta
Block 42 area slightly weaker ...	 Area	0.378 ha	-	-	 Magenta

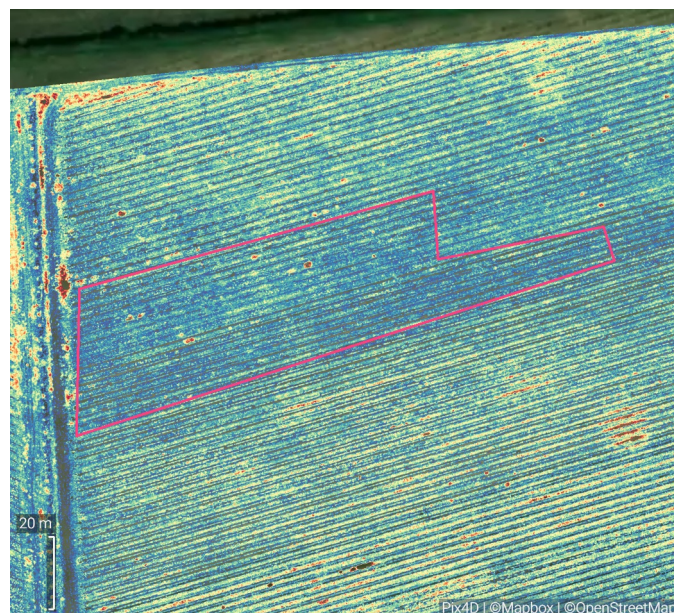
Area annotations	Area
 Magenta	1.150 ha

ReCI chlorophyll leaf content

Annotations



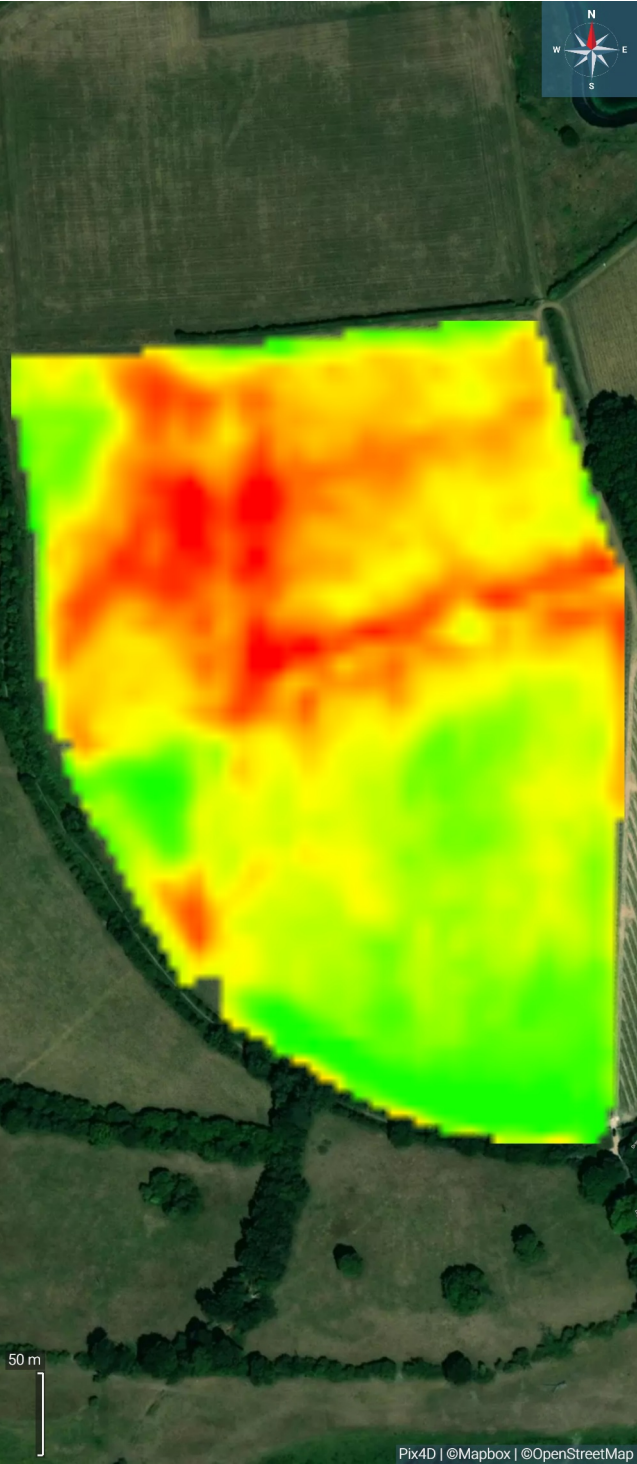
Name: Block 5 going strong
Area: 0.772 ha
Mean index: 6.218 (SD: 3.053)
Mean index (visible): 6.298 (SD: 2.751)



Name: Block 42 area slightly weaker than surrounding
Area: 0.378 ha
Mean index: 3.487 (SD: 1.527)
Mean index (visible): 3.844 (SD: 1.351)

Sat NDMI

Index



Layer details

Acquisition	23/08/2024 13:17:00 GMT Summer Time
Center	51.0933810, -1.1848034 (WGS84)
Area	~13.072 ha
GSD	501.619 cm/px
Bands	1 (Gray)

Histogram and Legend



Visualization settings

Histogram equalization: On
Selected minimum value: 0.130
Selected maximum value: 0.322
Values out of range: Solid

Statistics

Layer area: 13.072 ha
Mean index: 0.225
Index SD: 0.047
Mean index (visible): 0.224
Index SD (visible): 0.043